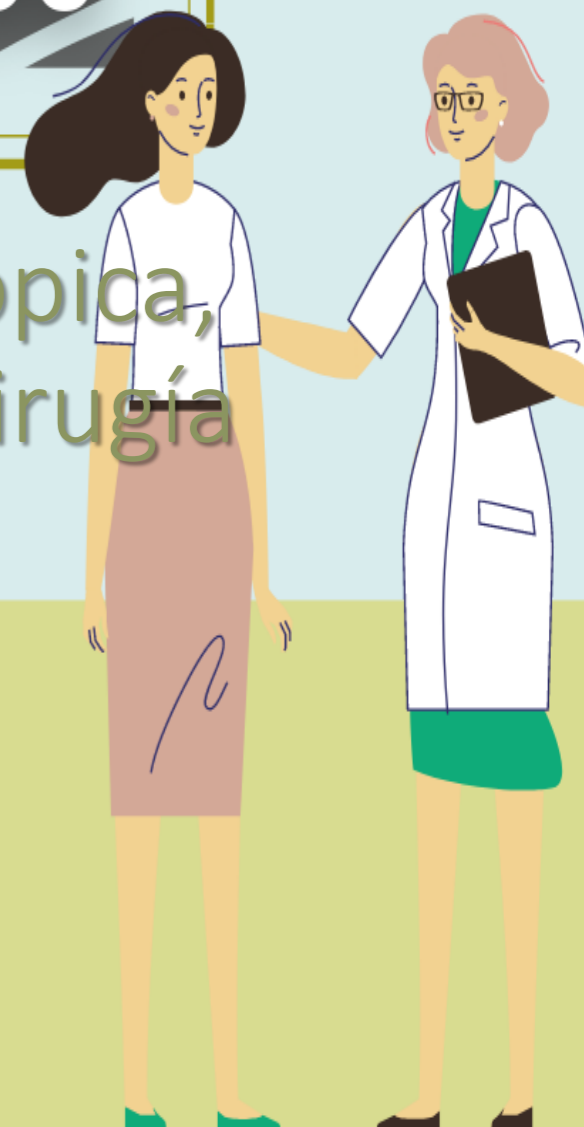


ESCUELA PARA PACIENTES CON TUMORES NEUROENDOCRINOS

Tratamiento local: resección endoscópica,
terapias ablativas locorregionales y cirugía

José Díaz Tasende
Jefe de Sección Unidad de Endoscopias.
Consulta de Alto Riesgo de Neoplasias Gastrointestinales
Hospital Universitario 12 de Octubre



COLABORADORES



ESTEVE



IPSEN
Innovation for patient care

ADVANZ
PHARMA

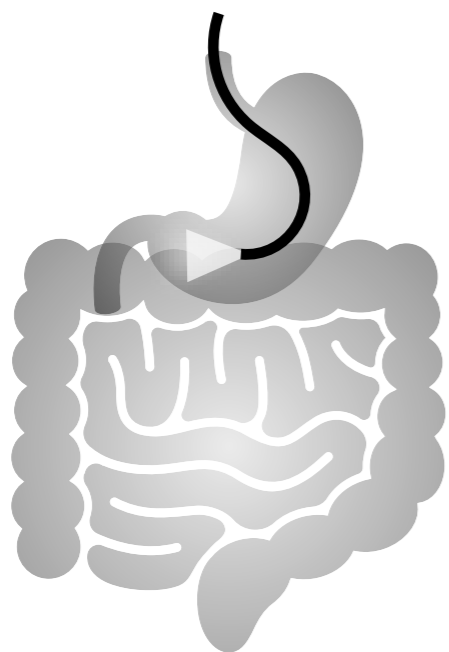
Hospital Universitario
12 de Octubre

ORGANIZADO
POR

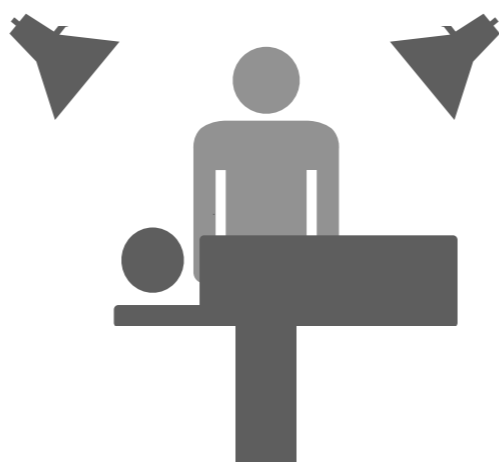
Fundación
OncoSur

1

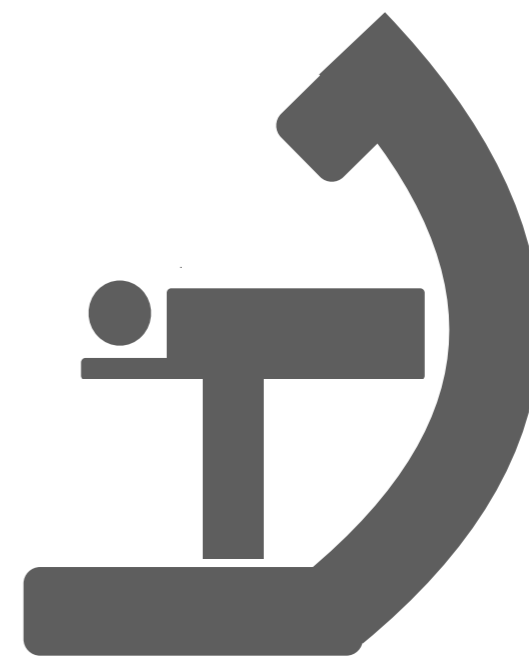
¿Cuáles son los
tratamientos
disponibles?



Endoscópicos



Quirúrgicos



Radiología
intervencionista

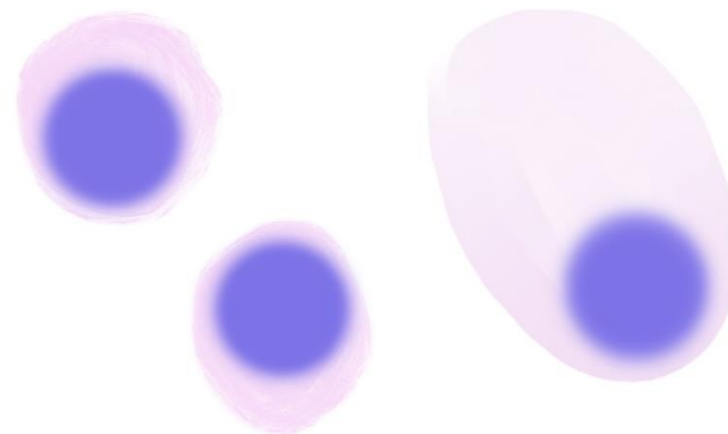


2

¿De qué
depende la
decisión de
tratamiento?







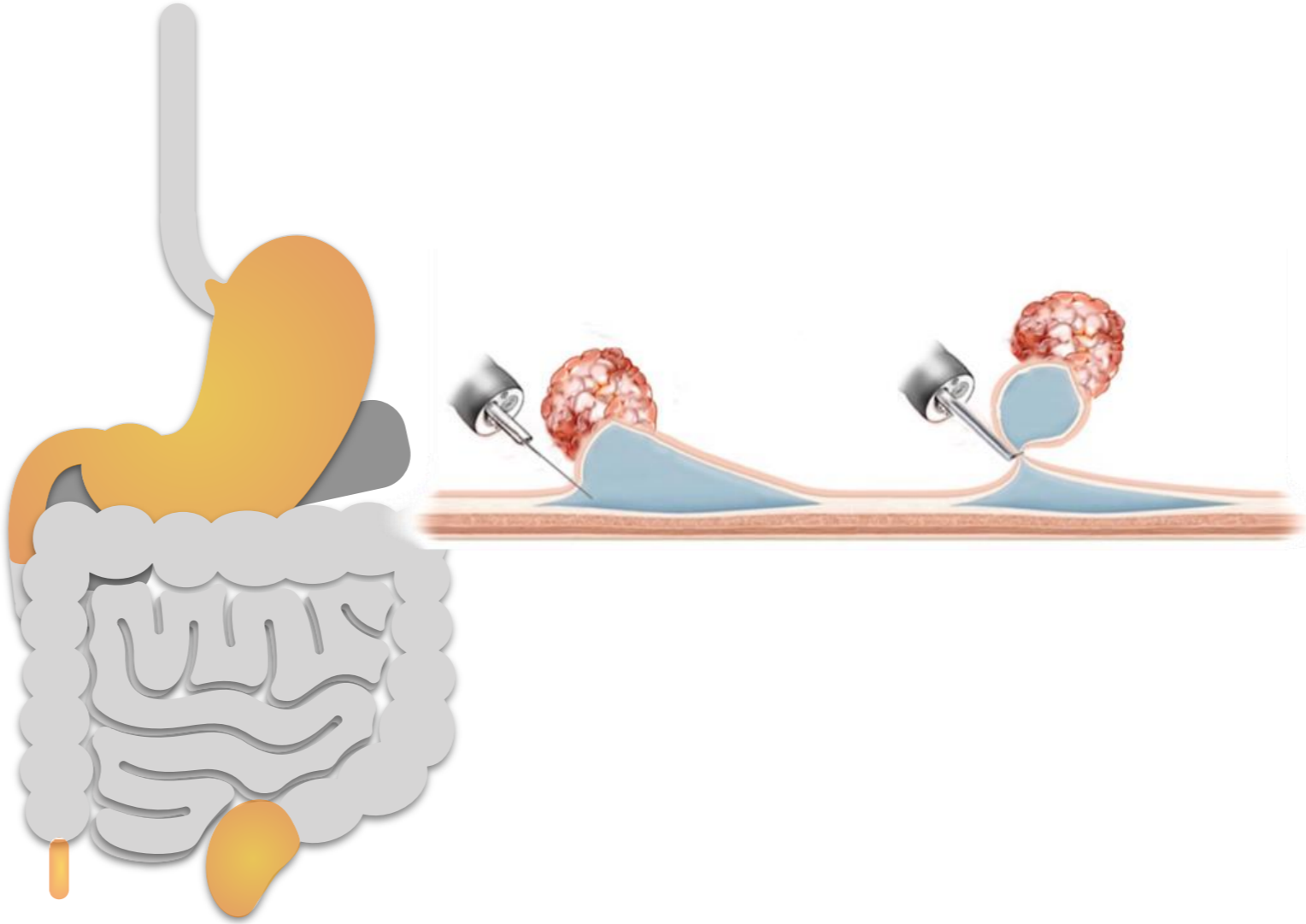
La localización



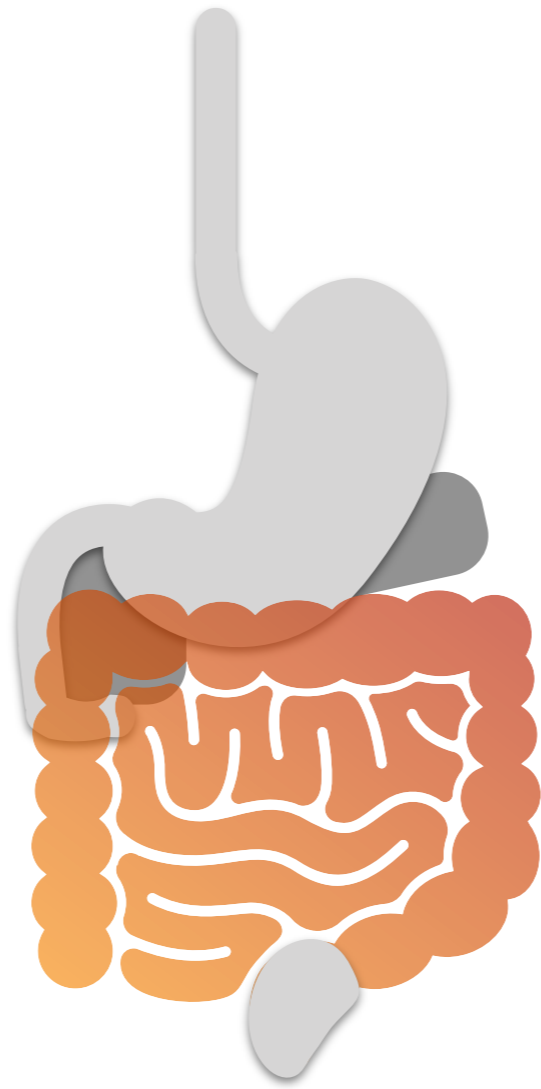
La localización



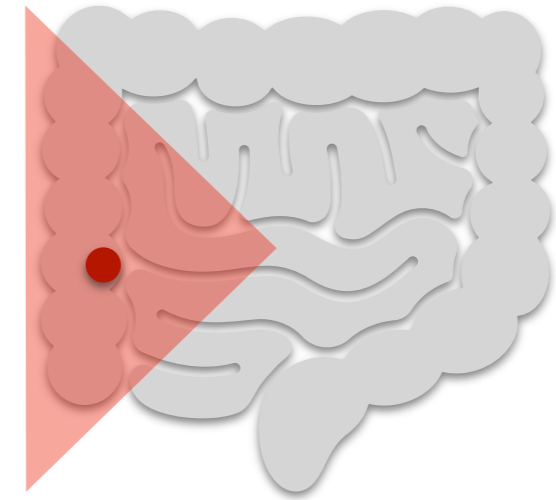
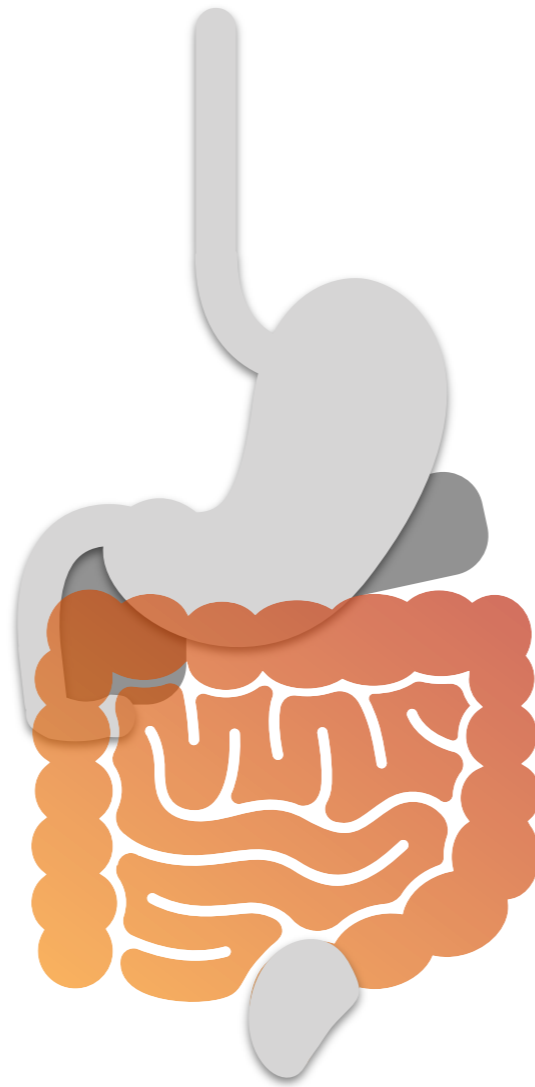
La localización



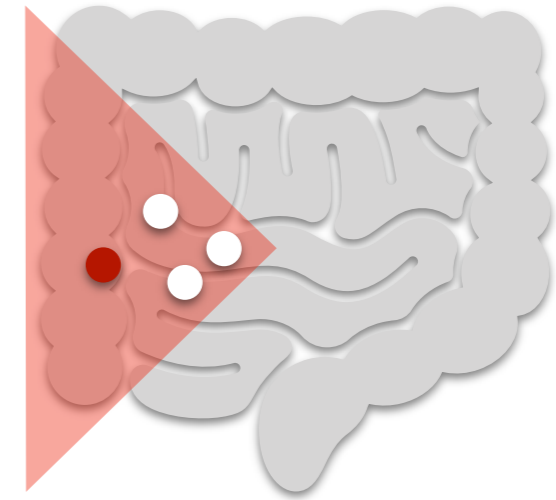
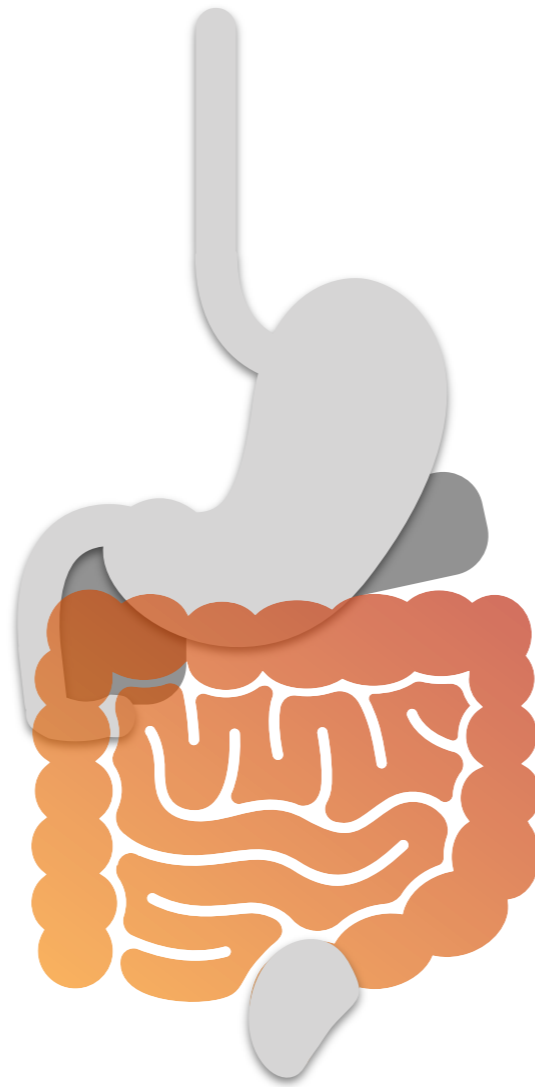
La localización



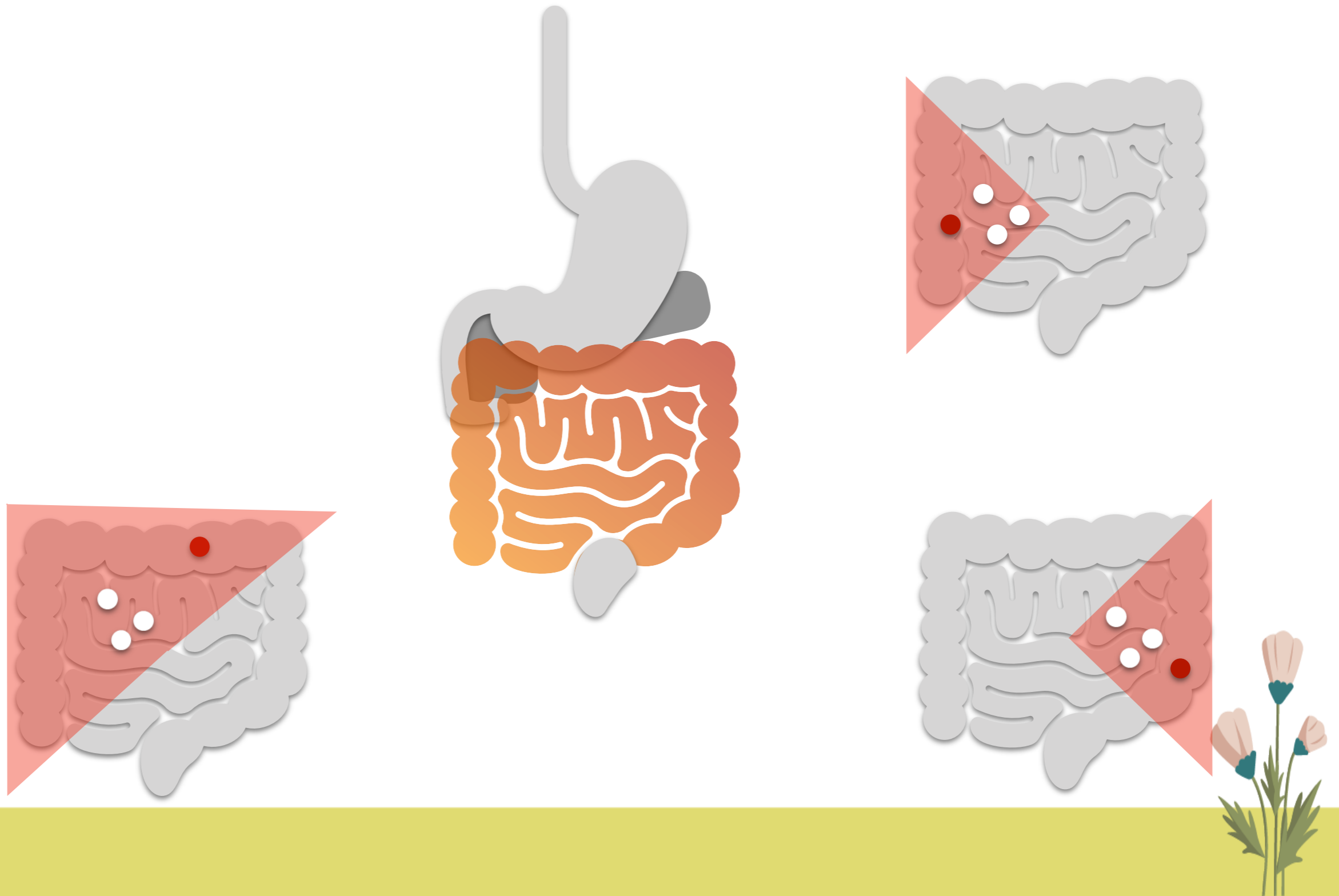
La localización



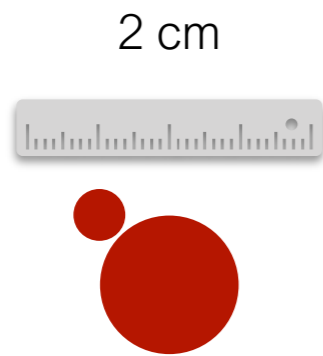
La localización



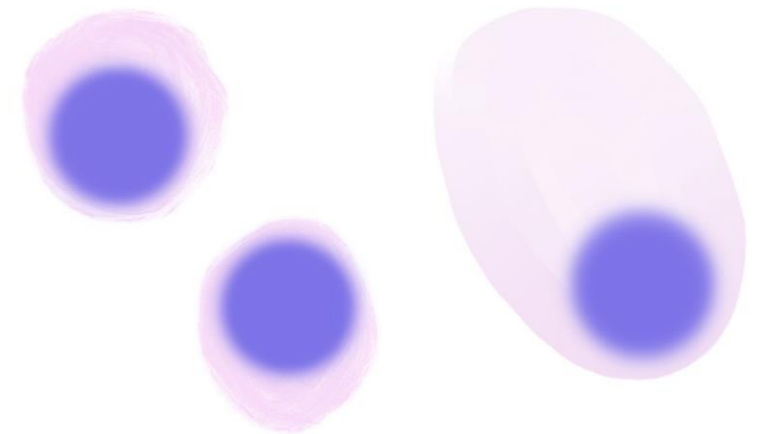
La localización



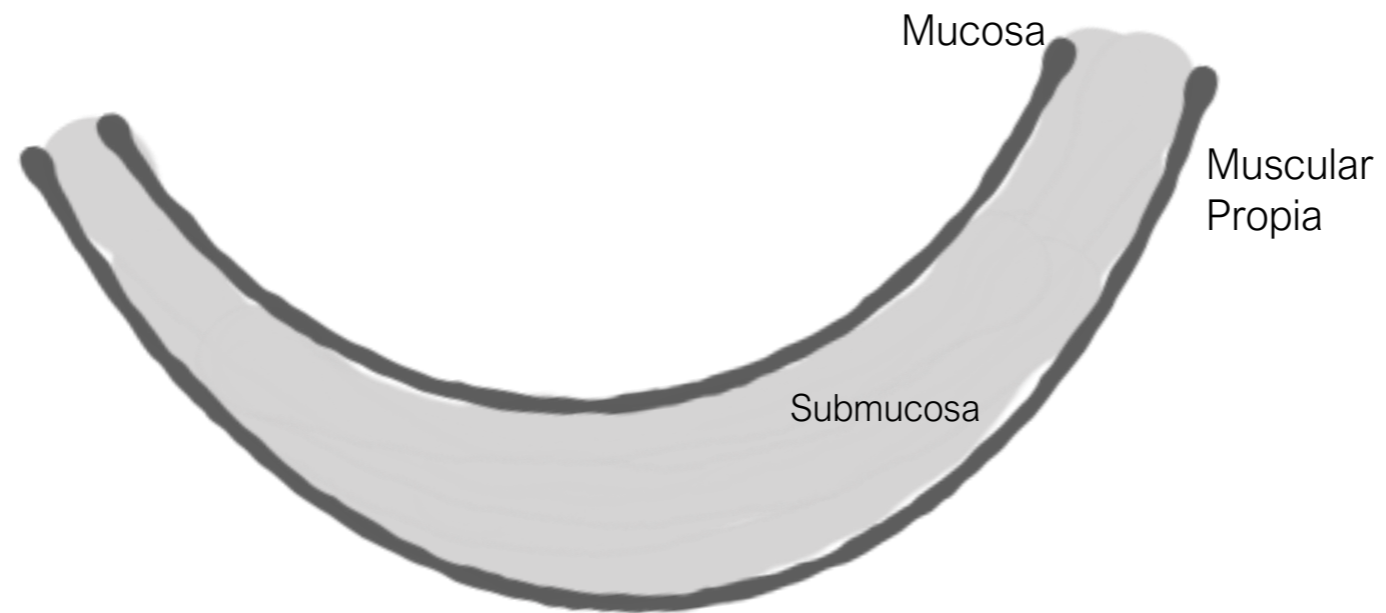
El tamaño



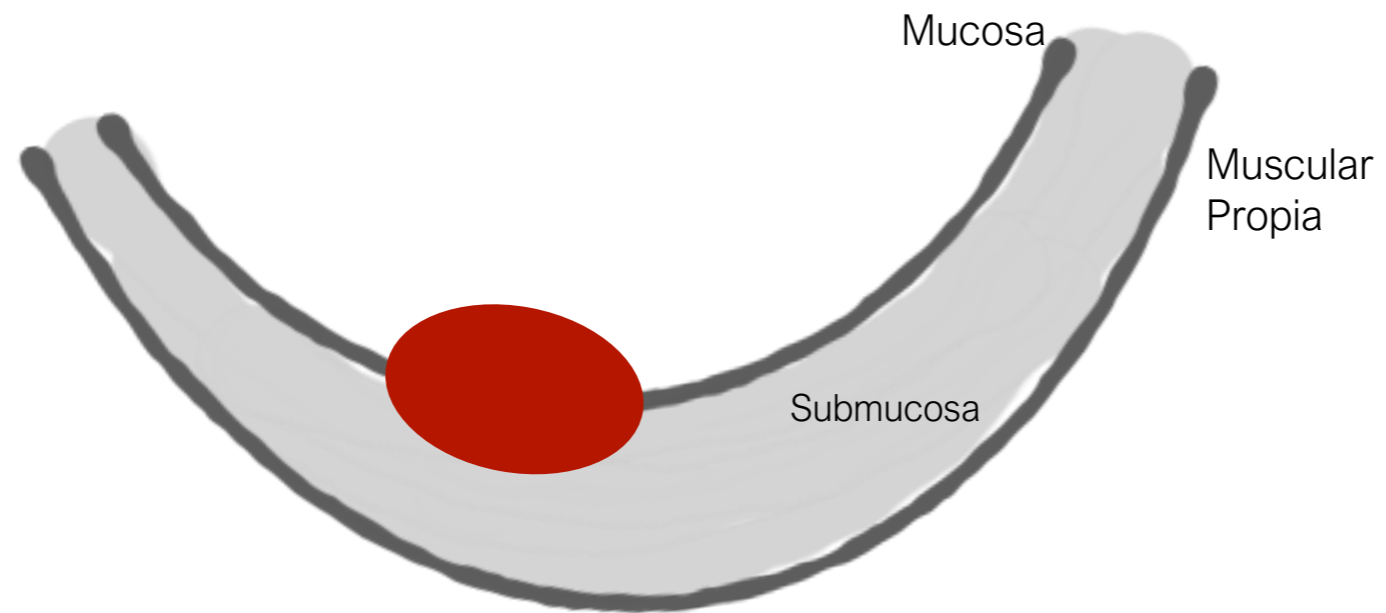
El grado



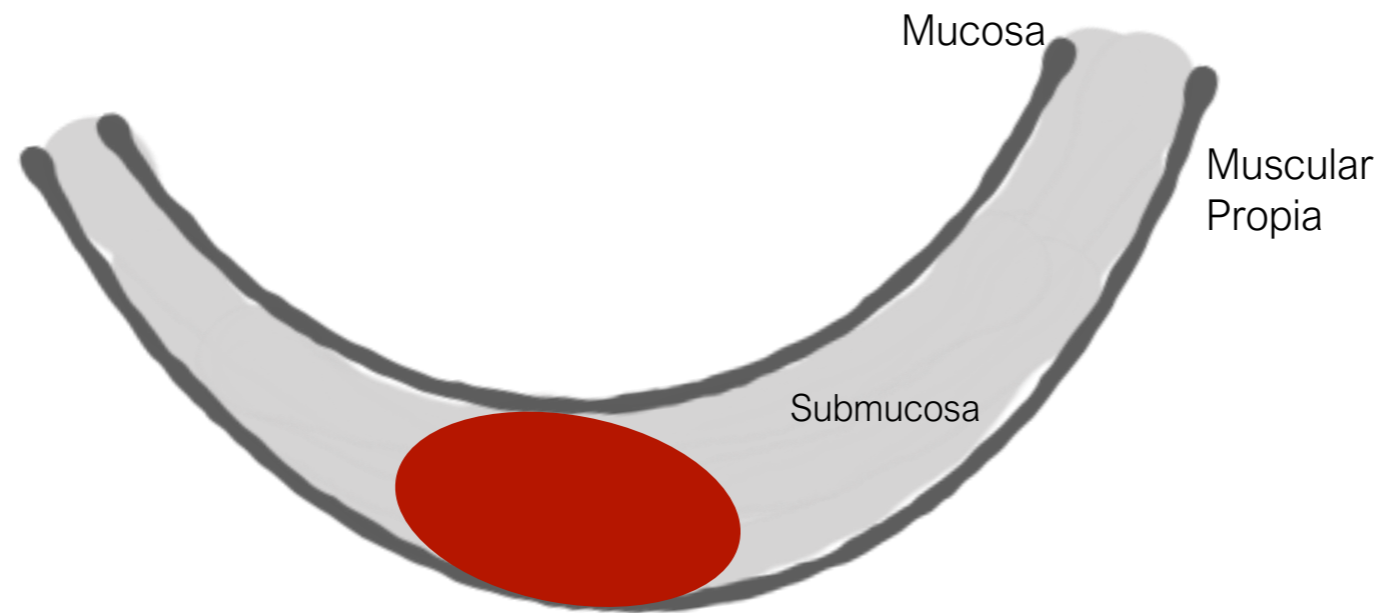
El estadio

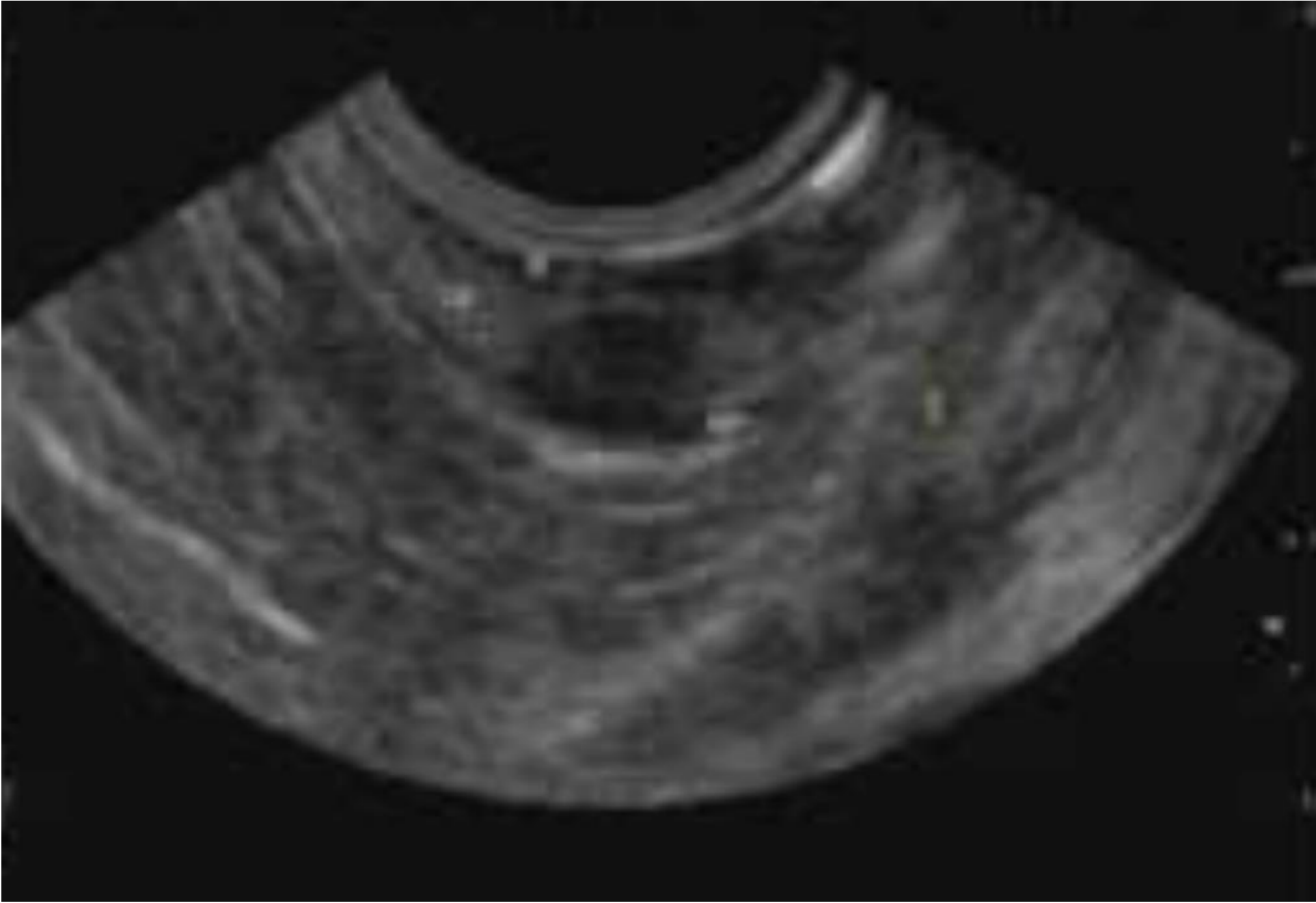


El estadio

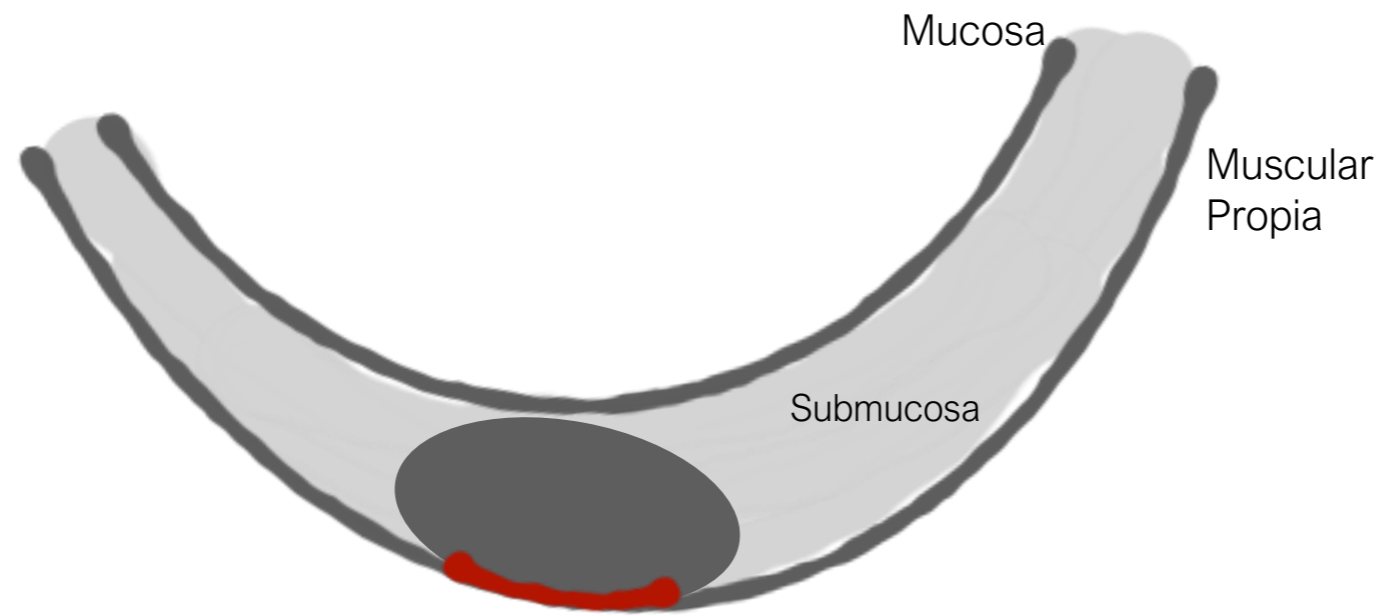


El estadio



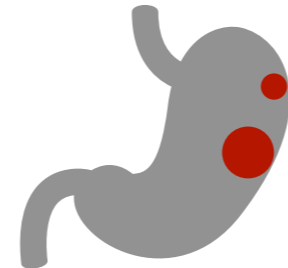


El estadio



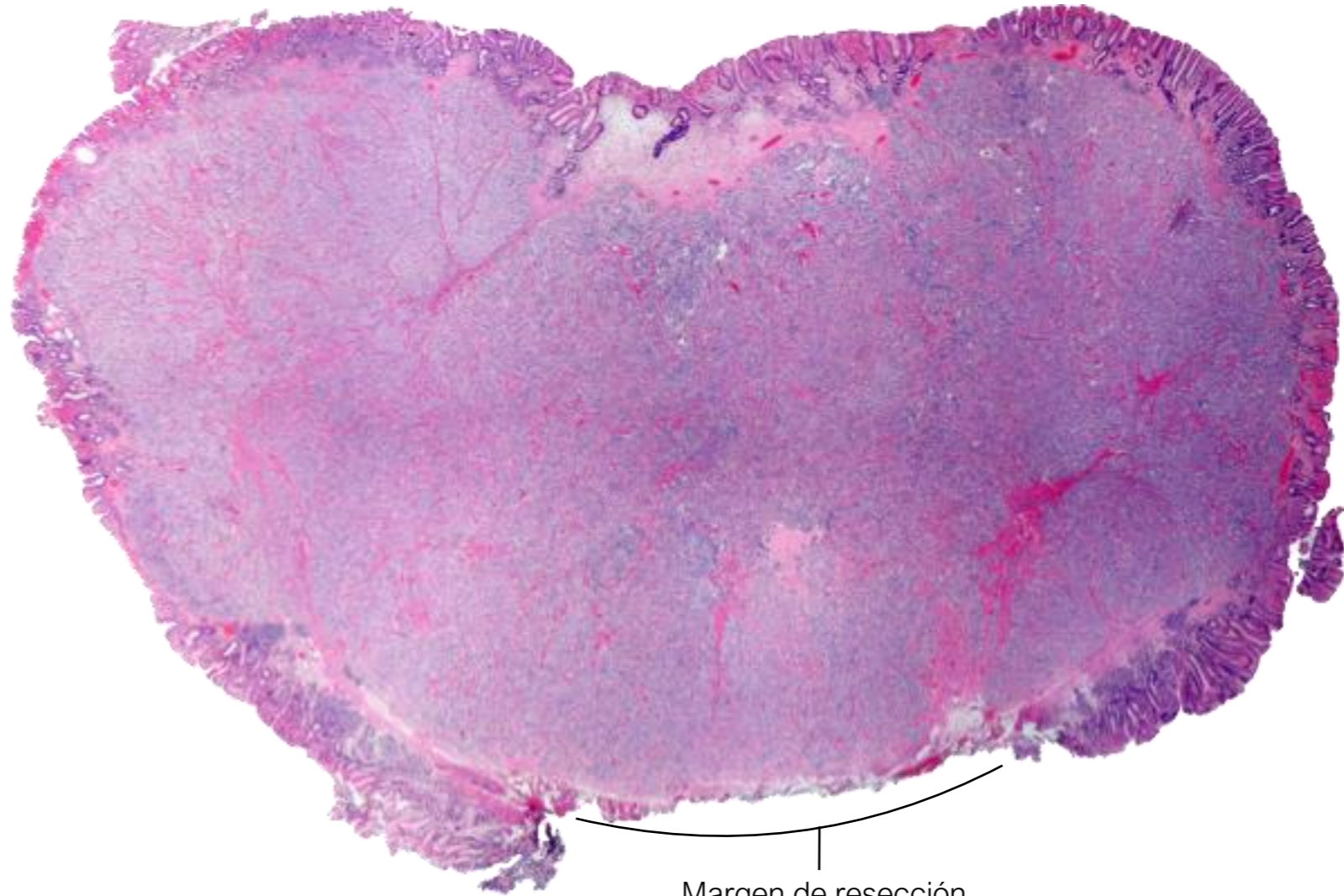


42 a



12 mm G1

22 mm G2

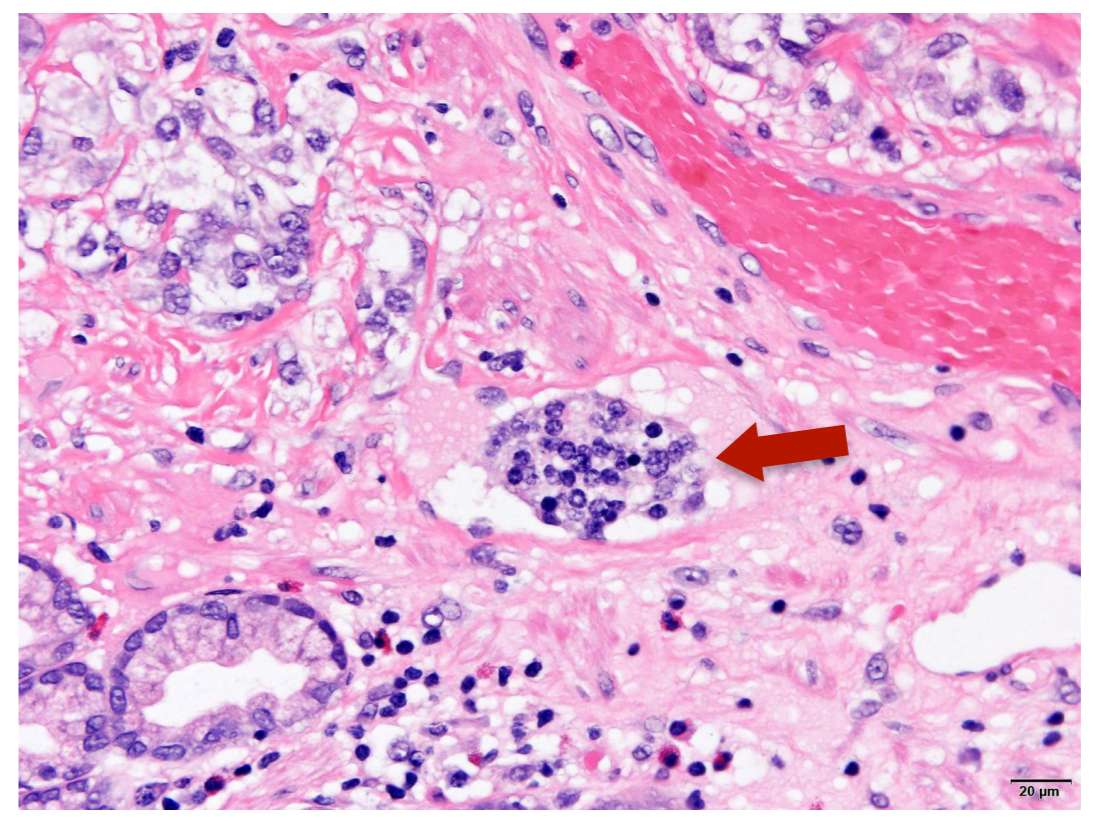
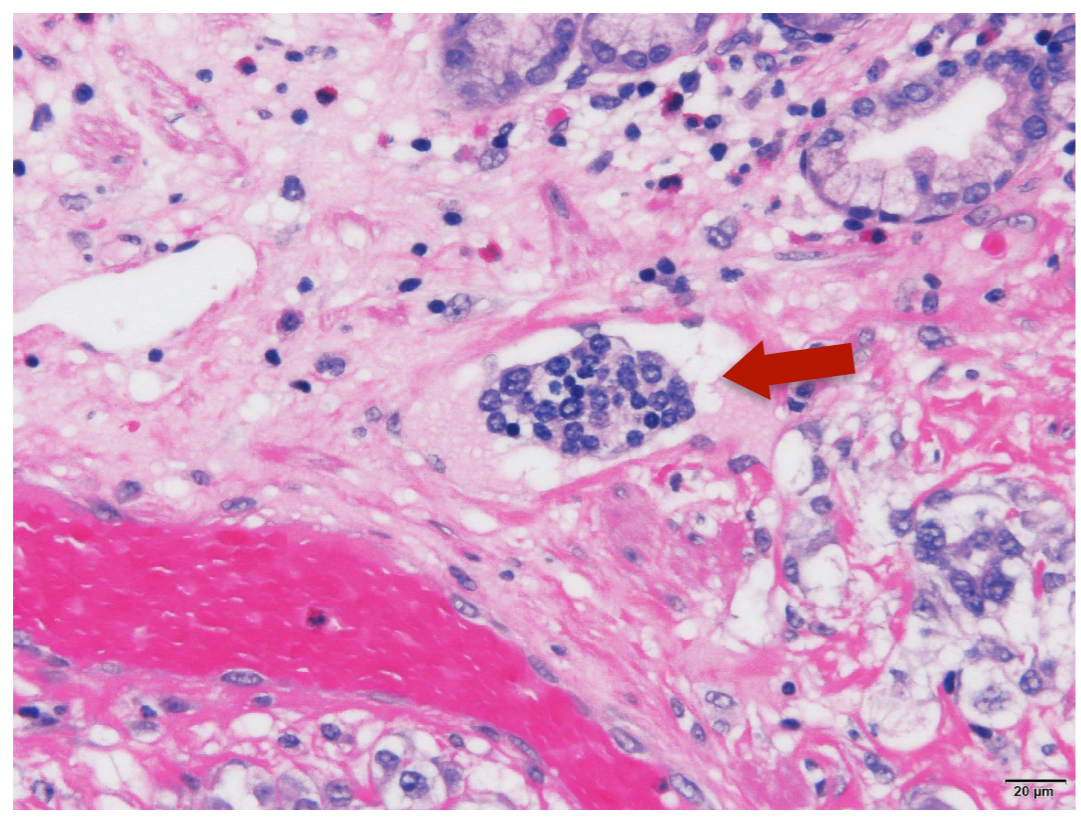
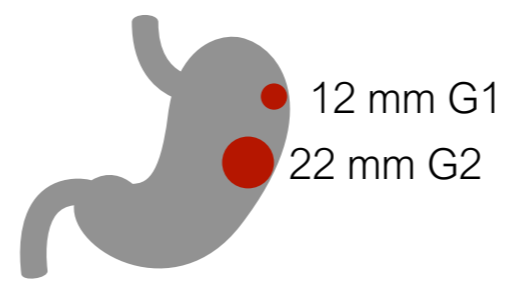


Margen de resección

Cortesía
Dr. Javier Salamanca.
franciscojavier.salamanca@salud.madrid.org
Departamento de patología
Hospital Universitario 12 de Octubre. Madrid

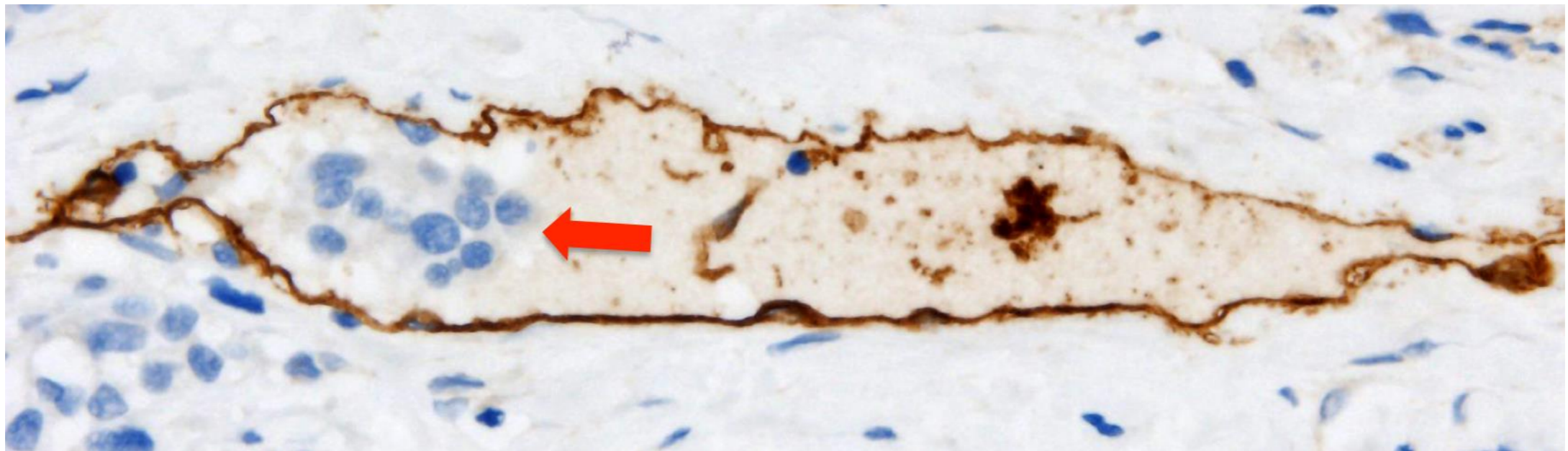
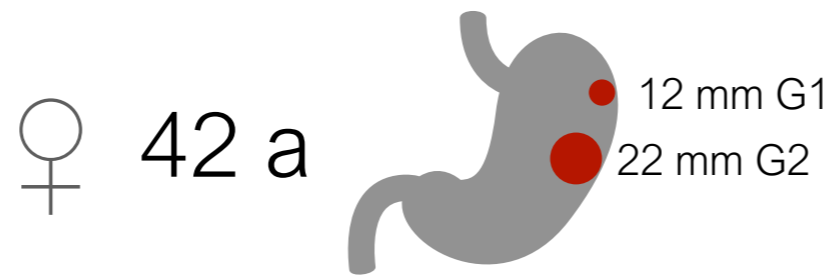


♀ 42 a



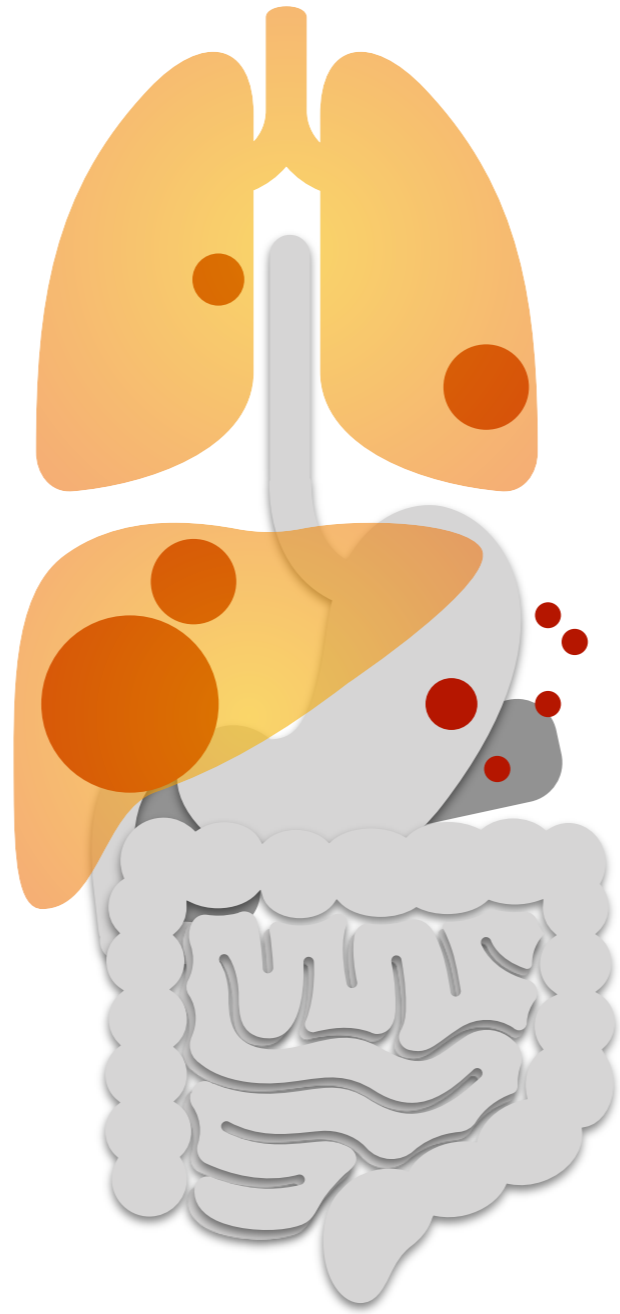
Cortesía
Dr. Javier Salamanca.
franciscojavier.salamanca@salud.madrid.org
Departamento de patología
Hospital Universitario 12 de Octubre. Madrid



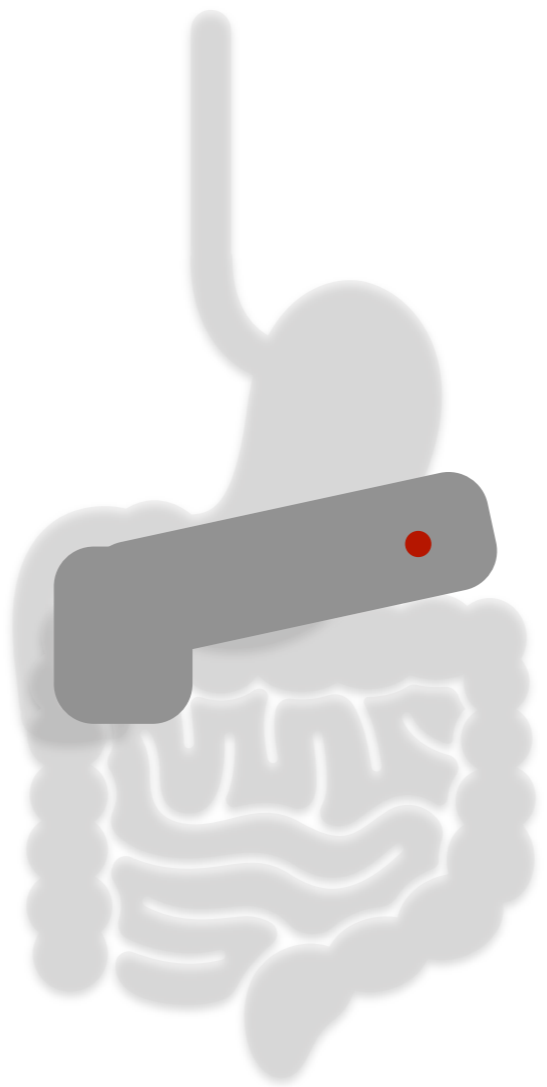


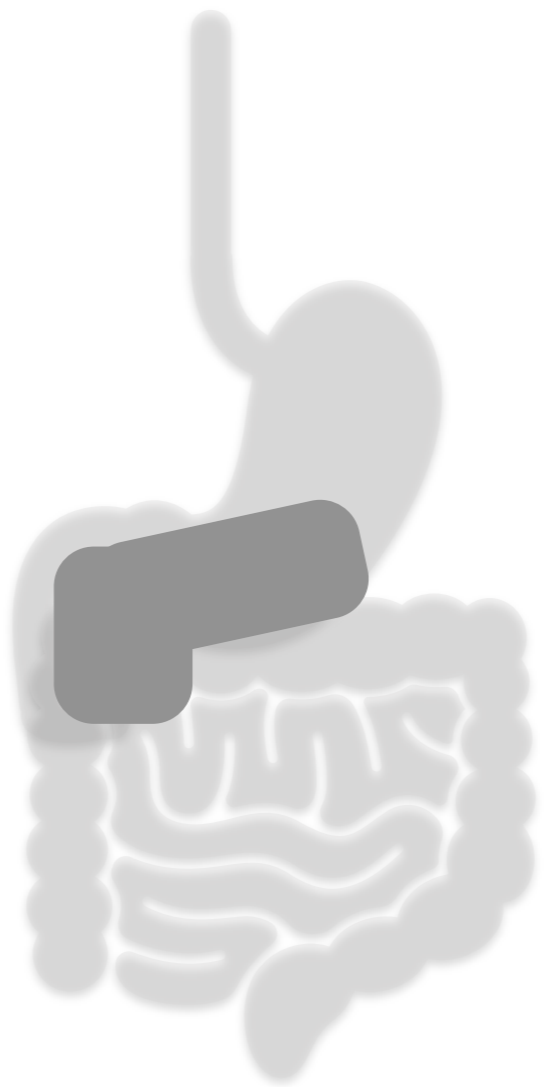


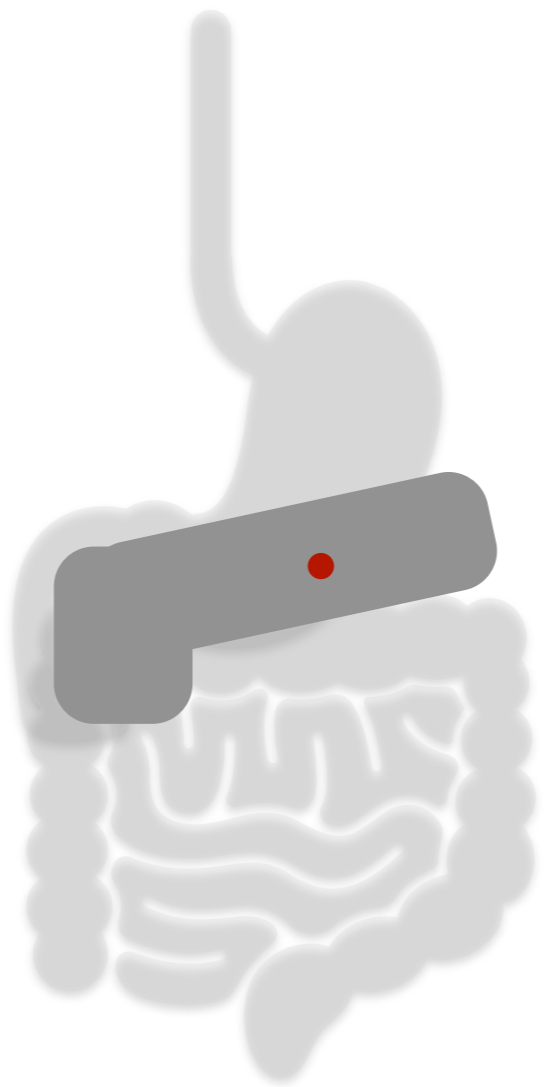


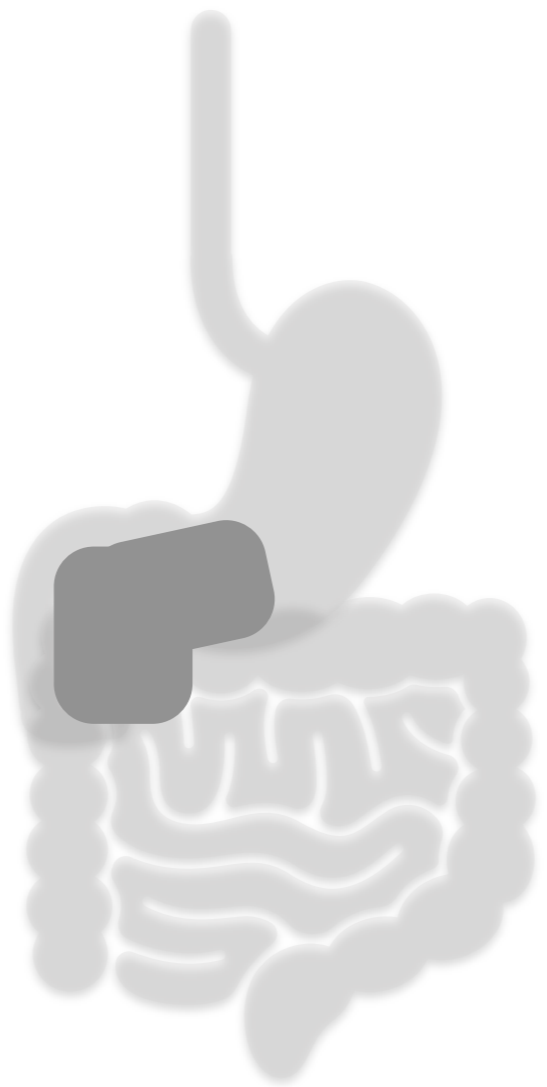


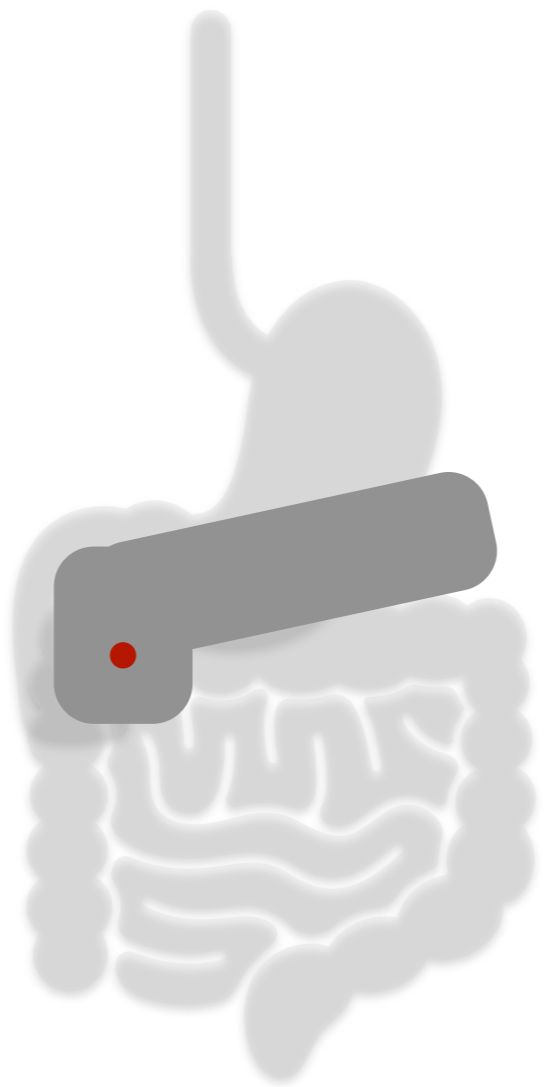




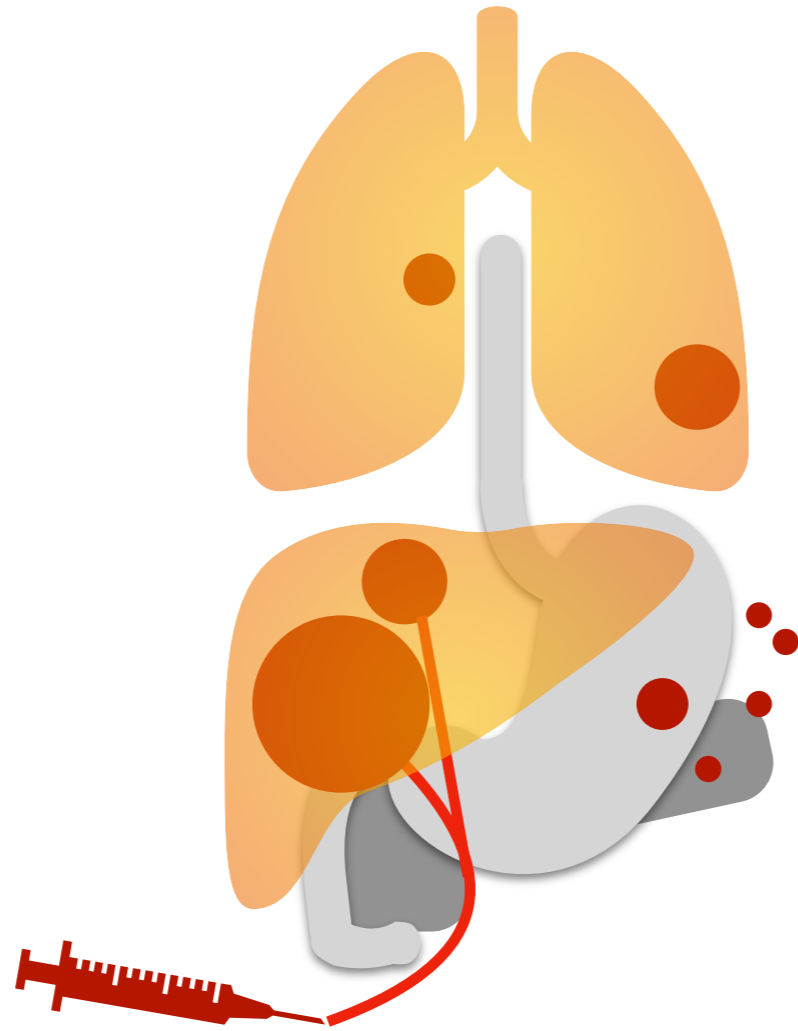


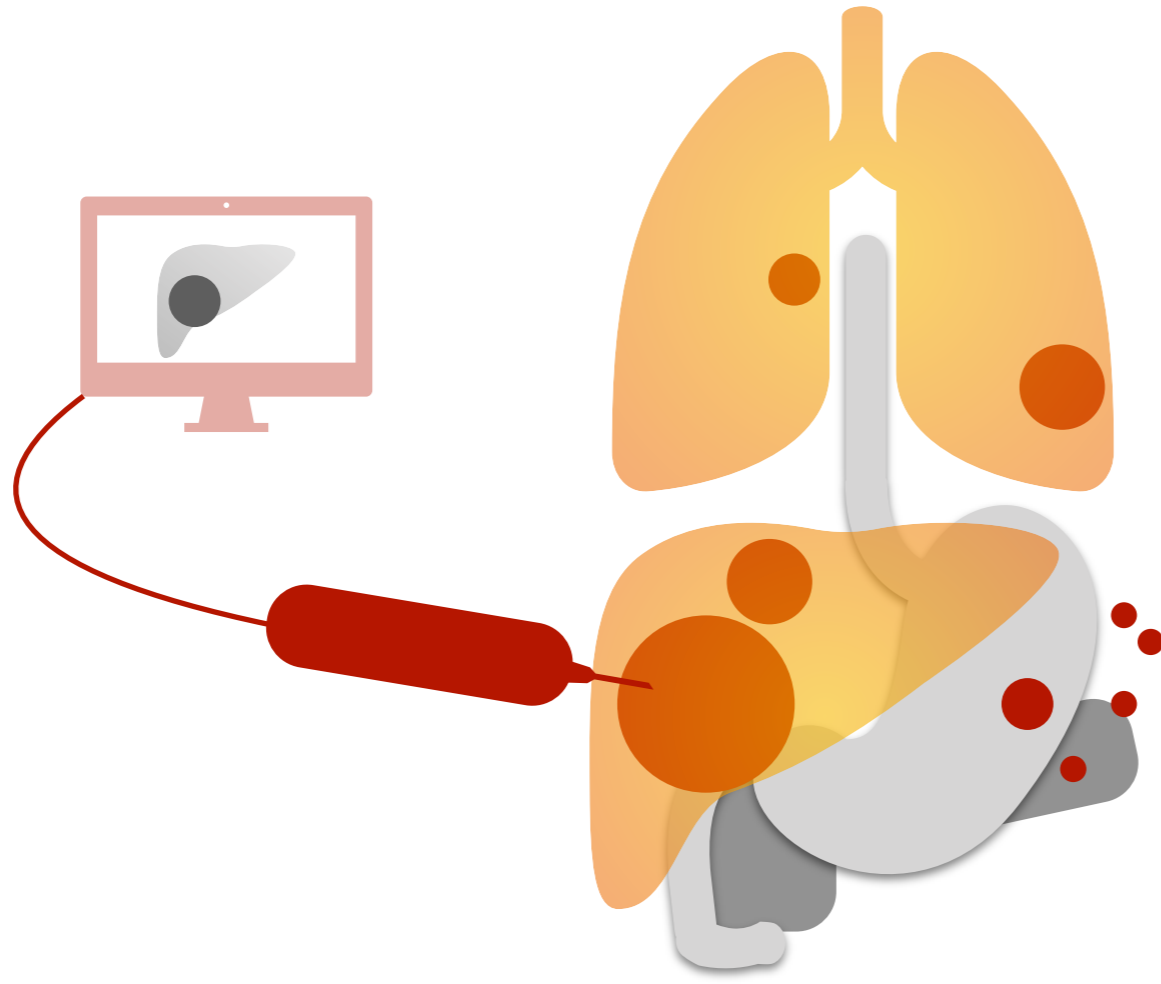


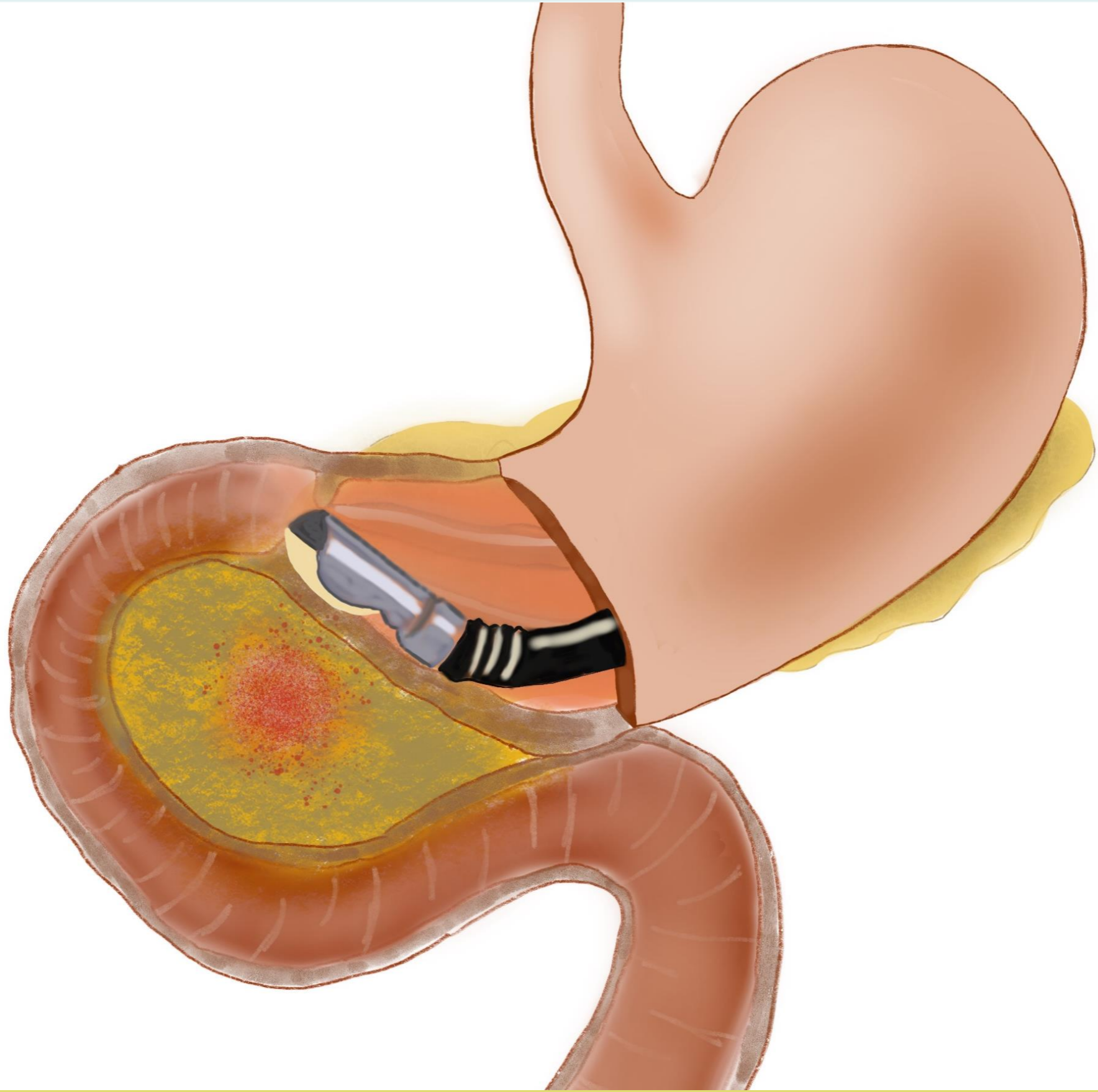


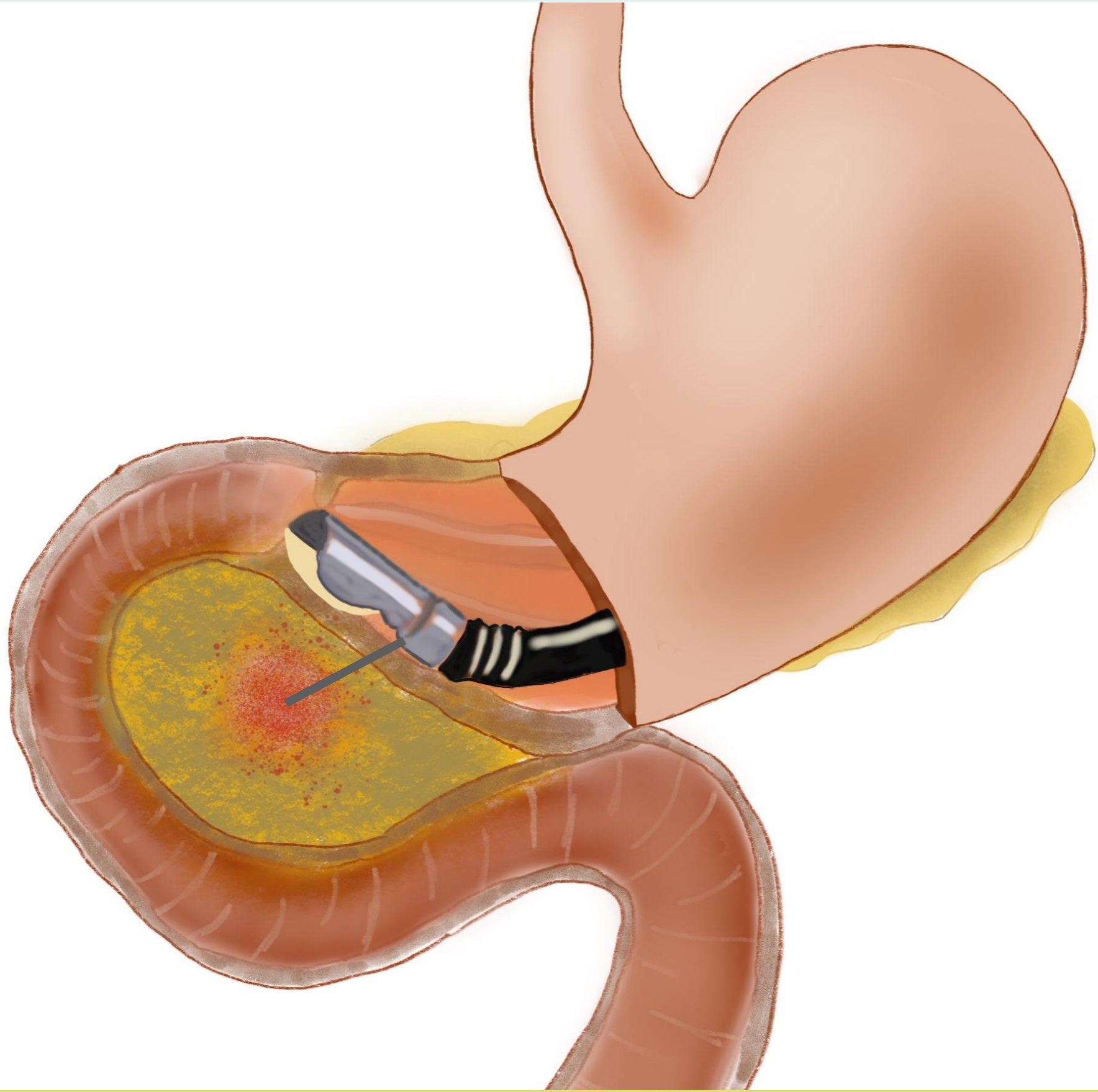












3

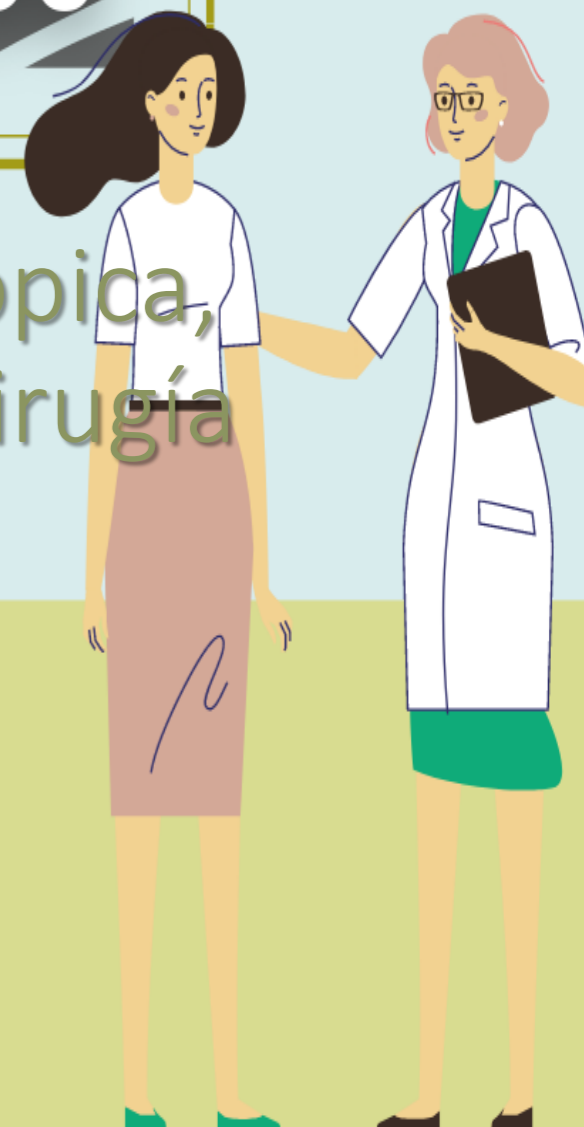
¿Qué puedo
aportar como
paciente?

La importancia
de la relación
médico-paciente

ESCUELA PARA PACIENTES CON TUMORES NEUROENDOCRINOS

Tratamiento local: resección endoscópica,
terapias ablativas locorregionales y cirugía

José Díaz Tasende
Jefe de Sección Unidad de Endoscopias.
Consulta de Alto Riesgo de Neoplasias Gastrointestinales
Hospital Universitario 12 de Octubre



COLABORADORES



ESTEVE



ADVANZ
PHARMA



ORGANIZADO
POR

Fundación
OncoSur